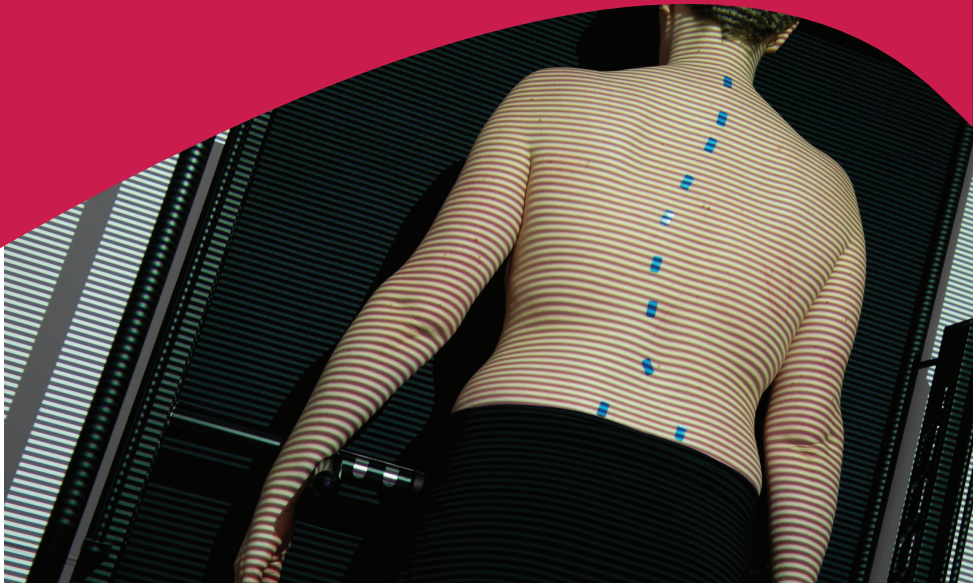


Surface Topography

Information for patients undergoing
a Surface Topography Scan



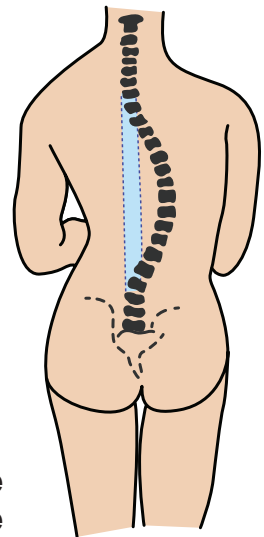
During your spinal clinic appointment at the Leeds Teaching Hospitals, you may be asked to have a Surface Topography Scan. This leaflet explains why this is important and what will happen.

What is Surface Topography?

A Surface Topography scan is created using a photographic image which provides information on the size and angle of spine curvature. This helps with the on-going monitoring of scoliosis. A Surface Topography scan can be used to record scoliosis and other forms of curvature of the spine.

What is Scoliosis?

- Scoliosis is a sideways curvature of the spine.
- The curvature can vary from being slight to severe and can also cause the spine to twist and move the ribcage out of position.



How scoliosis can affect the position of the spine

What will happen?

From the orthopaedic outpatients department or the Pre assessment Clinic, you will be directed to clinical photography where you will be escorted to the Surface Topography room where you will be seen by a Clinical Photographer.

You will be asked to remove all clothing from your upper body and loosen your trousers/ skirt - robes and a changing room are provided. Hair will need to be tied up if necessary.

A black paper band will be placed around your neck and waist to define the area of the back being scanned.



The photographer will then place some stickers on your back to mark out the shape of your spine.

This provides reference points on the image, which enables the spinal curvature to be measured.



You will then be asked to stand on the scanning platform, disrobe, and place your arms over the bars by your side.

The photographer will then capture the photograph of your back which will take a matter of seconds.

You can then put the robe back on.

The neck and waist bands can be removed and the photographer will remove the stickers from your back and you can get dressed in the changing room.



The computer will analyse the photograph of your back and produce a set of clinical results. Your orthopaedic consultant will then explain what the scans show in your appointment.

Do I have a choice about whether to have an Surface Topography scan taken?

Yes. As with any medical procedure you will always be asked for your permission before the scan is performed and will be given a consent card to sign.

If you change your mind afterwards you may be able to withdraw your consent, depending on consent level.

What will the Surface Topography scans be used for and who will see them?

The scans will only be used by health professionals involved in your care. In addition, if the doctor requires it and you agree, they may also be used for:

- Medical education of Leeds Teaching Hospitals Trust staff.
- Medical research.
- Publication - if this is the case, you will be told which publication the image will appear in.

How many Surface Topography scans will I have?

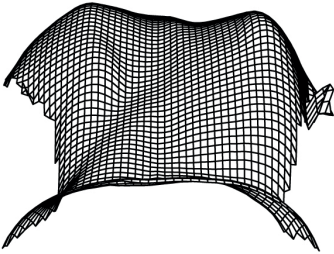
Your doctor will advise you on when a scan is necessary, this may be at every appointment or once a year. Unlike an X-ray, Surface Topography uses the same technology as a regular photograph so you can have as many scans as your Consultant thinks is necessary.

How are the images stored?

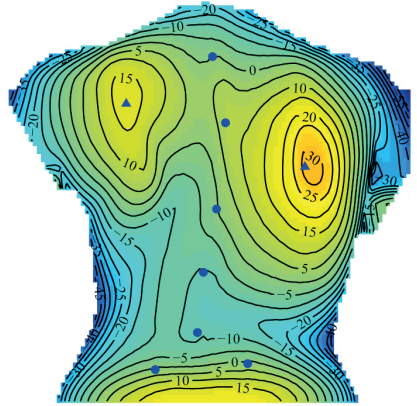
In addition to a print stored within your medical notes, an original digital file is securely stored within the Surface Topography scan database.

The images are kept for the same length of time as your medical records and are covered by the Data Protection Act. The images are uploaded to the trust's secure Medical Image Manager database. Access to this database is password protected. Storage and retrieval of scan images are carried out under information governance guidelines.

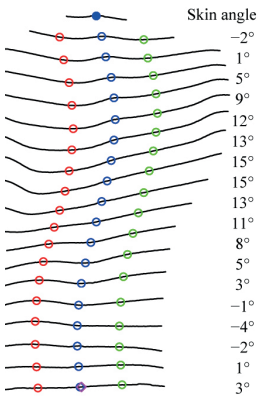
Height map



Contour plot

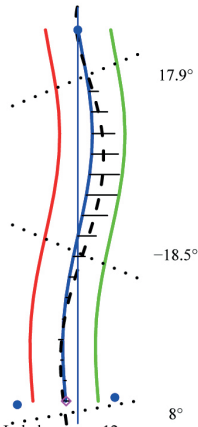


Transverse



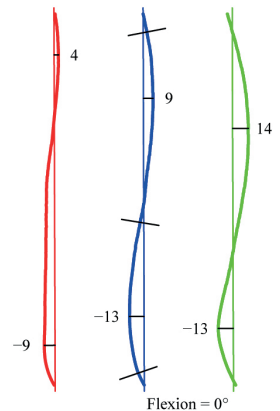
Rotation = -1°
Backlength = 327 mm

Coronal



Imbalance = -12 mm
Lateral asymmetry = 36°R and 27°L
Volumetric asymmetry = 1 L 31 R

Sagittal



Flexion = 0°
Max kyphosis and lordosis on plot in
Kyphosis = 20° Lordosis = 29°

701

Printout of a scan

Questions and concerns

We understand that you may feel nervous about having a Surface Topography scan and will try to make the experience as quick and simple as we can for you.

If you have any questions or require any further information about your Surface Topography scan, please feel free to discuss this with one of our qualified clinical photographers, or contact us on:

Telephone: (0113) 392 8115

If you have any questions or concerns that are not directly related to your Surface Topography scan appointment, please contact the Medical Illustration Central Service point, who will direct your enquiry to the relevant department:

Telephone: (0113) 392 8115

Email: leedsth-tr.MedicalIllustrationLTH@nhs.net

Or contact the hospital switchboard on:

Telephone: (0113) 243 2799

How to find us

Leeds General Infirmary

Clinical Photography - A Floor Clarendon Wing, Leeds General Infirmary, Great George Street, Leeds, LS1 3EX

Website: www.leedsth.nhs.uk



What did you think of your care?

Scan the QR code or visit bit.ly/nhsleedsfft

Your views matter



© The Leeds Teaching Hospitals NHS Trust • 4th edition Ver 2.0
Developed by: Sian Jarvis-Colbeck - Clinical Photographer
Produced by: Medical Illustration Services
MID code: 20210212_001/MH

LN002390
Publication date
02/2021
Review date
02/2023