

Learning Disability/ Intellectual Disability and Autism Team Strategy

2021- 2024

Learning Disability
and Autism Team





Contents

| | Page |
|---------------------------------------------------------------|------|
| Introduction | 4 |
| What is a Learning Disability/Intellectual Disability? | 4 |
| What is Autism? | 4 |
| Relationship between Learning Disability and other conditions | 4 |
| Learning Disability and Autism Team | 5 |
| Contact Details | 6 |
| Current team provision for patient care | 7 |
| Referrals | 7 |
| Drivers | 8 |
| Current service provision to patients | 10 |
| Priorities for 2021-2024 | 11 |
| Strategic priorities for 2020-2023 | 11 |
| Accountability/ Governance | 12 |
| Reporting | 13 |
| LTHT reporting | 13 |
| External reporting | 13 |
| Attendance | 14 |
| LTHT attendance | 14 |
| External attendance | 14 |

Introduction

The terms Learning Disability (LD) and Intellectual Disability (ID) are used interchangeably. Leeds Teaching Hospitals Trust (LTHT) is committed to improving care for patients with Learning/Intellectual Disabilities (LD), Autism or both. This strategy supports that commitment. The Trust has a legal duty to make reasonable adjustments in line with the Equality Act (2010) and aims to provide outstanding patient safety, quality and experience. It is well known that people with LD and/ or Autism have historically experienced inequality when accessing health services (and continue to experience worse outcomes than people who do not have LD and/or Autism (4th Annual report from LeDeR, 2020).

This strategy was produced by the LTHT LD and Autism Team following consultation with key stakeholders in Leeds Teaching Hospitals Trust and reference groups from across Leeds. It was approved by the Patient Experience Sub Group and Lisa Grant, Chief Nurse - Executive Director responsible for LD and Autism.

What is a Learning Disability/ Intellectual Disability?

A widely used definition is:

Learning disability includes the presence of:

A significantly reduced ability to understand new or complex information in learning new skills, with:

A reduced ability to cope independently (impaired social functioning), which started before adulthood, with a lasting effect on development' (Valuing People, 2001)

LD might also be called (amongst other terms) global developmental delay, special needs, SEND, additional needs, impaired intelligence. This is not the same as a Learning Difficulty, such as dyslexia, which does not affect intellect. The Learning Disability and Autism Team does not support people with Learning Difficulty only.

What is Autism?

Autism is a lifelong developmental disability which affects how people communicate and interact with the world. (<https://www.autism.org.uk/advice-and-guidance/what-is-autism>).

Autism is often referred to as a 'spectrum' as no two Autistic people are the same, they each have different profiles and preferences.

Autism might also be called: Autistic Spectrum Condition (ASC), Autistic Spectrum Disorder (ASD), or Aspergers

Relationship between Learning Disability and other conditions

Around 4 in 10 Autistic people have a learning disability (www.autistica.org)

Around 3 in 10 people with epilepsy have a learning disability (www.nhs.uk/conditions/learningdisability)

Learning Disability and Autism Team



Lisa Grant
Chief Nurse



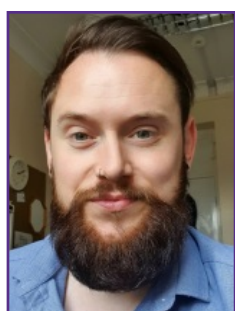
Alison Conyers
Lead for LD & Autism



Rachel Davies
Clinical Nurse Specialist



Sammy Gibson
Clinical Advisor



Lloyd Wilkinson
Admin Assistant



Rachel Barwick
Clinical Nurse Specialist

Contact Details

Available Monday to Friday 8.30am - 4.30pm

 Telephone Number: 0113 206 6836

 Email: leedsth-tr.ldautism@nhs.net

 Twitter: @getmebetter

Outside our working hours, please seek support from these websites (for example, to download a hospital passport). Alternatively please discuss support and reasonable adjustments with either the Nurse in Charge or the Clinical Site Manager.

Learning Disabilities Intranet page:

<http://lthweb.leedsth.nhs.uk/sites/learning-disabilities/>

Autism Intranet page:

<http://lthweb.leedsth.nhs.uk/sites/autism>

Learning Disabilities Internet page:

<https://www.leedsth.nhs.uk/a-z-of-services/learning-disability/>

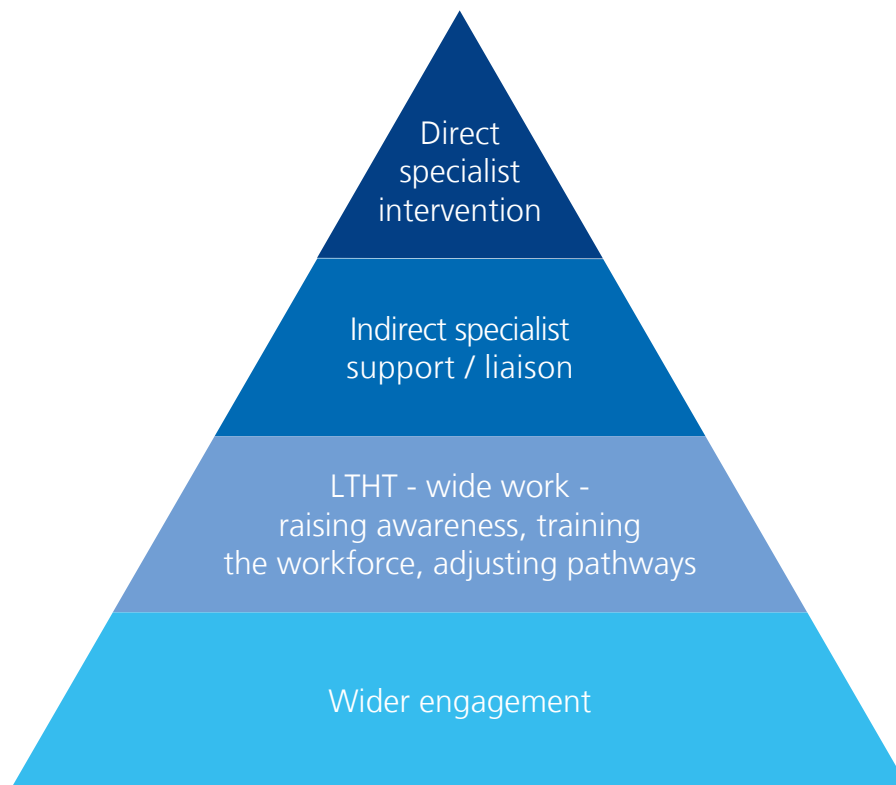
Autism Internet page:

<https://www.leedsth.nhs.uk/a-z-of-services/autism/>



Current team provision for patient care

The support that the LD and Autism Team provides can be considered in four levels.



Referrals

Referrals are made to the team in a variety of ways, including

- Patient Portal (the team is automatically notified of all flagged inpatients)
- Phone Call
- Email
- Face to Face

The team also pick up any queries arriving via Patient Advice and Liaison Service (PALS) / Incident reports, where Learning Disability and/ or Autism are recorded.

Current service provision to patients

Support for patients with a diagnosis of LD and/ or Autism may include:

- Promoting person centred care
- Consideration of 'Reasonable Adjustments'
- Provision of health passport
- Help for clinicians to understand the specific needs of the patient, secondary to LD and/or Autism
- Liaison with wards and clinic areas
- Liaison with a patients' support network
- Desensitisation work
- Admission planning including care coordination for complex cases
- Support offered with hospital discharge to increase chance of successful discharge
- Signposting patients to request an Annual Health Check with their GP
- Face to Face support if required- including a face to face visit within 24 hours for anyone who is admitted for unplanned care
- Review of notes, including review of Recommended Summary Plan for Emergency Care and Treatment (ReSPECT) forms as required
- Support to ensure patients, and their carers understand their care and treatment needs
- Support for patients to engage with care and treatment
- Post appointment and post diagnostic support
- Onward signposting to community services
- Support with Mental Capacity Assessment and Best Interests Decision making
- Actively seeking feedback from patients and people who support them
- Support to give feedback about care
- Prevention of potential diagnostic overshadowing
- Support to attend remote appointments e.g. attend anywhere
- Reporting of all deaths within LTHT to LeDeR, the Learning Disability Mortality review programme and contribution to LeDeR reviews.
- Support with distraction and de-escalation if required
- Adding flags to hospital needs

The team will continue to prioritise inpatients and the caseload is reviewed daily

Drivers



LTHT

- Feedback from patients and stakeholders e.g. PALS, complaints, compliments
- Feedback from LTHT staff
- Audits led by the LD and Autism Team e.g. care audit, ReSPECT audit, internal mortality review

Local and regional

- Leeds Autism Strategy: <https://leedsautismaim.files.wordpress.com/2017/01/2017-2022-leeds-autism-strategy.pdf>
- Leeds 'Being Me' Strategy: <https://www.through-the-maze.org.uk/wp-content/uploads/2019/10/Leeds-Learning-Disability-Partnership-Board-Strategy-2018-2021-1.pdf>
- Feedback from Leeds LeDeR panel
- West Yorkshire and Harrogate Health and Care Partnership, Mental Health, Learning Disability and Autism Strategy: https://www.wyhpартnership.co.uk/application/files/6915/7486/5141/mental_health_learning_disability_and_autism_five_year_strategy.pdf

National

- Learning Disability and Autism Improvement Standards: [https://improvement.nhs.uk/documents/2926/v1.17 Improvement Standards added note.pdf](https://improvement.nhs.uk/documents/2926/v1.17%20Improvement%20Standards%20added%20note.pdf)
- NHS Benchmarking- Action from Learning Report: <https://www.nhsbenchmarking.nhs.uk/>
- LeDeR reports: <https://www.england.nhs.uk/wp-content/uploads/2019/05/action-from-learning.pdf>
- NICE guidance, as appropriate: <https://www.nice.org.uk/guidance>
- The Accessible Information Standard: <https://www.england.nhs.uk/ourwork/accessibleinfo/>
- The Equality Act: <https://www.legislation.gov.uk/ukpga/2010/15/contents>
- National Autism Strategy: <https://www.gov.uk/government/publications/think-autism-an-update-to-the-government-adult-autism-strategy>
- The Long Term Plan: <https://www.longtermplan.nhs.uk/areas-of-work/learning-disability-autism/#:~:text=Learning%20disability%20and%20autism%20The%20NHS%20has%20a,of%20how%20best%20to%20support%20them%20as%20patients.>



Priorities for 2021-2024



Patient-centred



Fair



Collaborative



Accountable



Empowered

Patient-centred

We will ensure that our service is responsive to the needs and preferences of the patient, at all steps of their patient journey.

Fair

We will seek to embed reasonable adjustments into the standard working pathways of identified departments.

Collaborative

We will share our practice, working with partners in Leeds, West Yorkshire and Harrogate and nationally.

We will develop our work with teams in key areas, such as sepsis, behaviour support and tissue viability.

Accountable

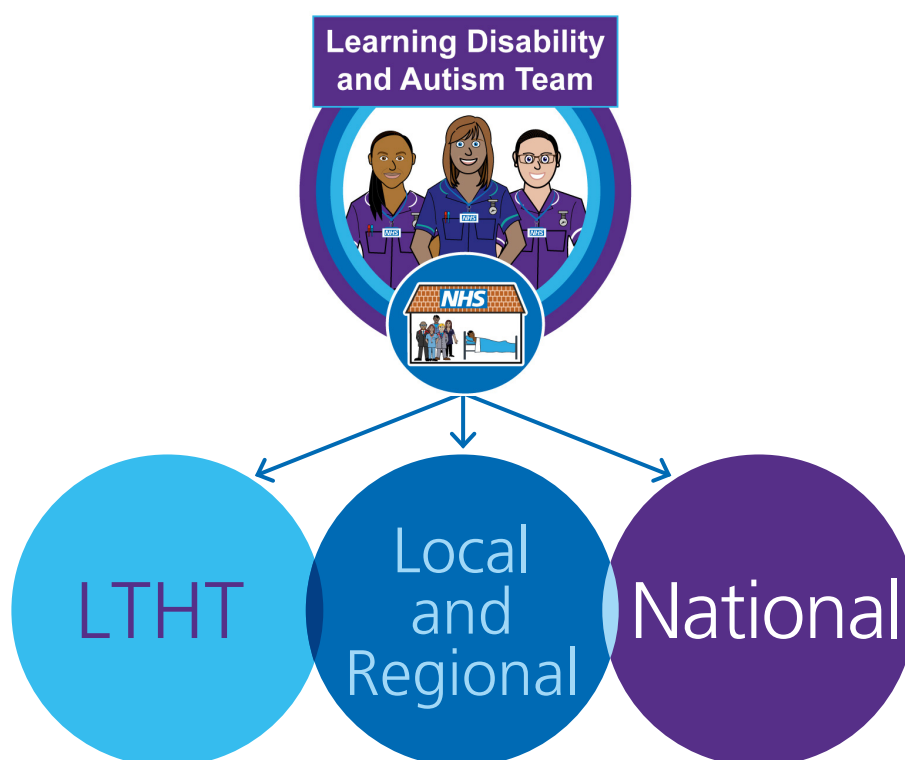
We will monitor performance via feedback about services offered by Leeds Teaching Hospital to patients with Learning Disabilities and Autism, responding and offering support as required.

Empowered

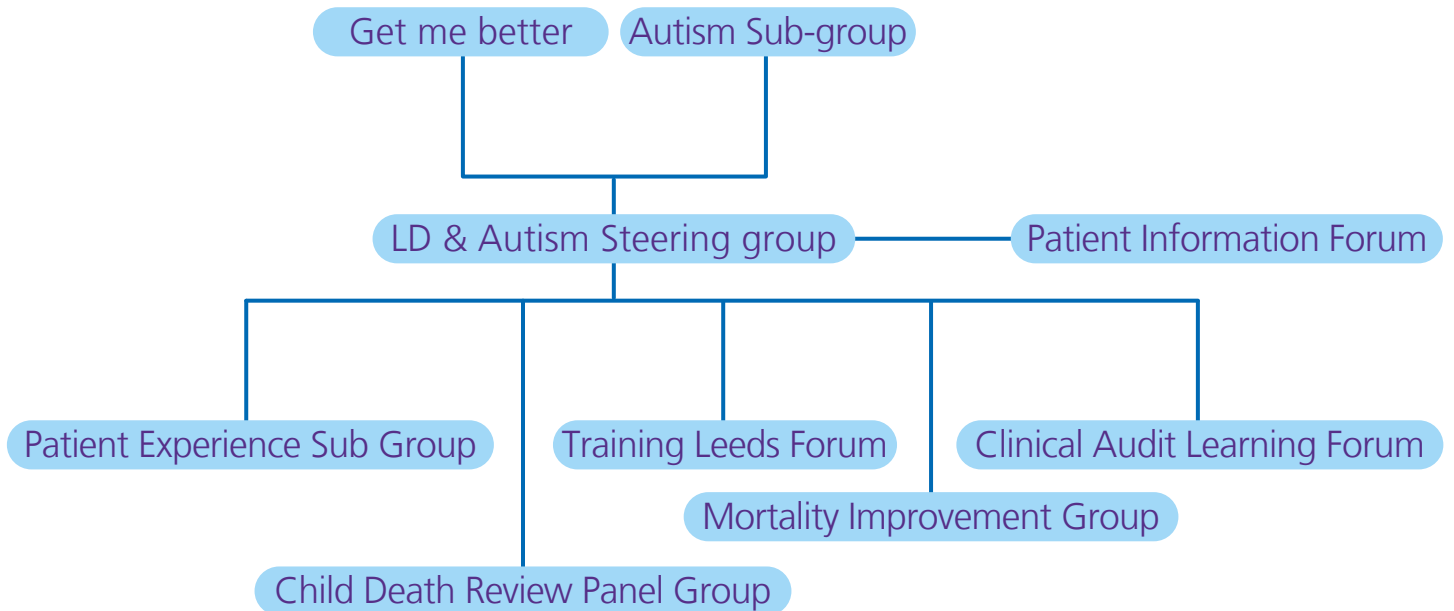
We will ensure that all staff in Leeds Teaching Hospitals have access to training about Learning Disabilities and Autism, where this is appropriate to their role.

We will seek to ensure that patients feel empowered to give feedback.

Accountability / Governance



LTHT Reporting



LTHT

Local and regional

- Learning Disability Partnership Board
- People's Parliament
- Health Task Group
- Autism Partnership Board
- SEND Partnership Board
- Leeds LeDeR Panel
- Leeds LD and Autism Work Plan Meeting

National

- NHS Annual Benchmarking



LTHT Attendance

LTHT

Attendance/ participation Within LTHT

- Carers Forum
- Dementia Steering group
- Sepsis collaborative
- Accessible Information Standards Meeting
- MCA/ MHA steering group
- DeEscalate Collaborative (two of the team are faculty members)
- Safeguarding Governance group
- Chief Nurse Digital Group

Local and regional

- Yorkshire and the Humber Access to Acute Network (LD and Autism Lead is the vice chair)
- Yorkshire and Humber Autism Operational Delivery Network Steering Group
- West Yorkshire and Harrogate Autism Learning disability and Autism Monthly Steering group
- Healthwatch meetings in Leeds, related to Learning Disability and Autism

National

- Contribution to national forums when relevant

Disabilities Autism

NHS
The Leeds
Teaching Hospitals
NHS Trust



getmebetter



