

Future Pathology

Your gateway to a career in pathology and science



Choose Pathology

Pathology: Oxford Dictionary Definition:

‘The science of the causes and effects of diseases, especially the branch of medicine that deals with the laboratory examination of samples of body tissue for diagnostic purposes’.

Pathology - It's a way of life

Pathology is at the forefront of healthcare innovation and diagnosis that affects us all from the cradle to the grave. It is estimated that 70% of all health care decisions affecting diagnosis or treatment involve a pathology investigation.

Pathology is vital for patients to get the services that they need, at the time and in the place that they need them. Pathology supports delivery of key targets and commitments, particularly around cancer, coronary heart disease, access, waiting times and A&E.

What Does Pathology Mean?

To our patients:



*Financial year
21/22

To us:

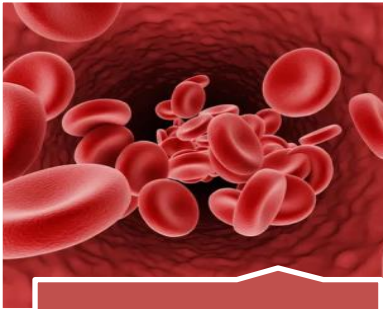


Our Future Pathology careers programme means that you can train to be a Biomedical Support Worker, Biomedical Scientist or Clinical Scientist in a way that suits you. Whichever path you choose, we'll support you every step of the way.

Our Pathology team of Clinical and Technical Healthcare Professionals provide analytical and interpretive services across a range of disciplines that comply with international quality standards. As well as the services provided internally within the Trust, services are offered to GPs, other NHS Trusts, international healthcare providers, and academic institutions.

Your career starts now. This is your **Future Pathology**.

The Specialities



Blood Sciences



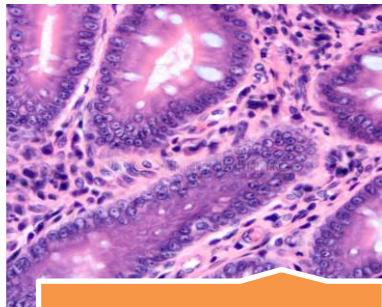
Blood Transfusion



Central Specimen
Reception



Clinical Genetics



Cellular Pathology



Lab Genetics



Microbiology



Specialist Laboratory
Medicine

Choose Career

If you want to leave work every day knowing what you've done really matters, you're in the right place.

Few other professions offer you as much choice or opportunity for personal and professional growth as Pathology. It is widely recognised as one of the most progressive career paths in the UK.

Many of our Pathology staff spend their entire careers within the NHS because there are so many exciting opportunities to be involved in shaping healthcare science.

We actively support our Healthcare Scientists and Healthcare Science Support Workers to develop their skills and consider careers in four facets of excellence which are:

- **Scientific practice:** help to prevent, diagnose and treat illness using their knowledge of science and their technical skills.
- **Scientific education:** training our clinical teams to have the right skills to diagnose and treat illnesses.
- **Scientific Leadership:** working across professions to lead teams in delivering care, implementing innovative new ways of working and being an ambassador for the healthcare science profession.
- **Research:** pushing the boundaries of science and healthcare to find new and better ways of caring for and treating our patients.

Here in Leeds, everything we do is underpinned by our core values: to empower people to be the best they can be, to be fair, accountable, to work collaboratively and above all to be patient-centred.

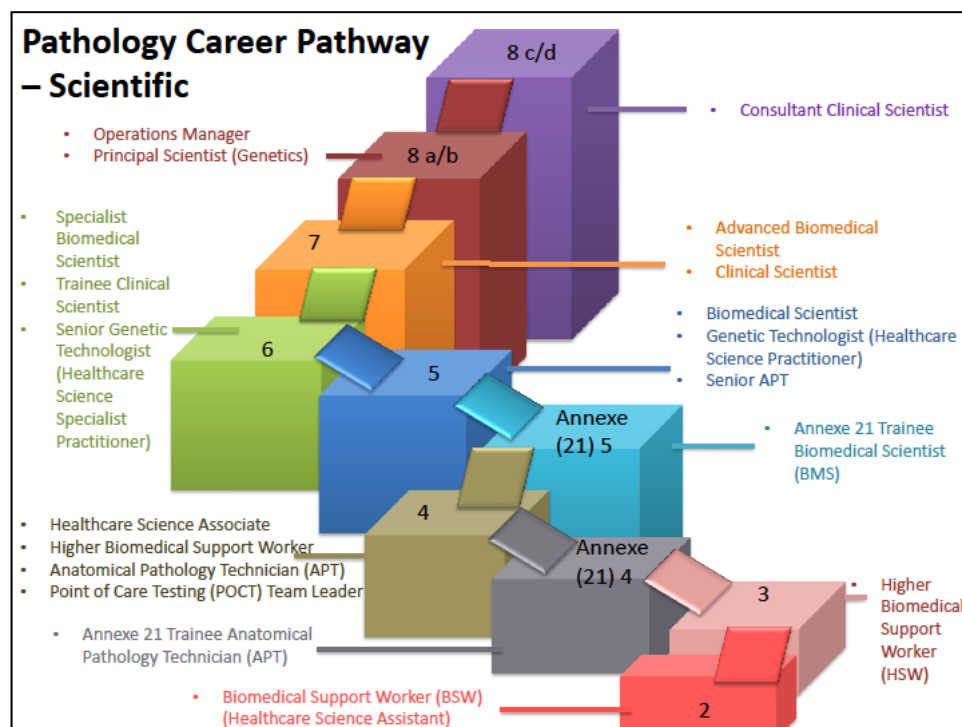
For further reading: <https://www.healthcareers.nhs.uk/>

Choose a Career Path

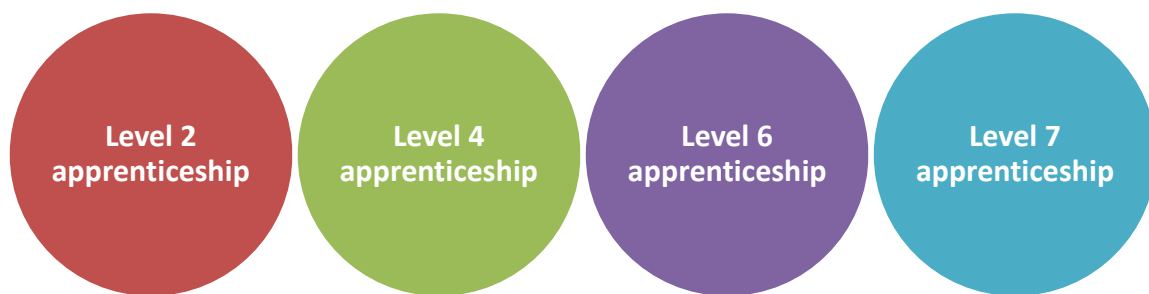
There are various different career paths into Pathology which is dependent on the role and speciality you choose from based on your interests, qualifications and previous experience.

Choosing colleges and universities is dependent on the career path you choose to follow. Local HEI's may be providers such as: Leeds Beckett University, Leeds Trinity or University of Bradford. For the Apprenticeship and Scientist Training Programme (STP) schemes at LTHT, the Higher Education Institute (HEI) will be dictated.

However, to follow the biomedical scientist route the degree needs to be Institute of Biomedical Science (IBMS) accredited although top up modules can be undertaken to ensure your degree meets the IBMS accreditation to become registered (<https://careers.ibms.org/students/accredited-degree-courses/undergraduate-uk-courses/>)



Apprenticeships



What will I achieve and where could it lead me?

Starting off with a BTEC level 2 Diploma in Healthcare Sciences - this apprenticeship consists of mandatory taught modules and assessments, combined with workplace modules, assessment and on the job training in your speciality area.

You will develop your electronic portfolio of work culminating with an End Point Assessment.

Depending on the level of apprenticeship you will be eligible to become a Healthcare Support Worker (Level 4), Healthcare Scientist (Level 6) or Advanced Healthcare Scientist (Level 7).

Institute of Biomedical Science

IBMS is the leading professional body for biomedical science. They are dedicated to the promotion, development and delivery of excellence in all aspects of biomedical science and will provide the highest levels of service to patients and the public.

They will support members in their practice of biomedical science and set quality standards for the profession through training, education, assessments, examinations and continuous professional development.

Academic qualifications

To achieve an IBMS Certificate of Competence your academic qualifications must meet the HCPC Standards of Proficiency for biomedical scientists.

Academic qualifications that meet the academic criteria set out in the HCPC Standards of Proficiency include:

- IBMS accredited honours degree
- IBMS accredited Sandwich honours degree
- IBMS accredited Integrated honours degree
- HCPC approved honours degree

If your degree is not IBMS accredited you will need to have your qualifications assessed and possibly take top-up modules before beginning an IBMS Registration Training Portfolio.

Laboratory training

Your laboratory training will involve completing the IBMS Registration Training Portfolio. You must complete the portfolio in a laboratory which holds

current IBMS pre-registration training approval. Once complete registration with the HCPC can be achieved.

<https://www.ibms.org/registration/how-do-i-become-a-biomedical-scientist/>

National School of Healthcare Science

The NSHCS is part of Health Education England (HEE) and has national responsibility for the management of the educational framework for training and development of Healthcare Scientists across more than 40 specialities in the NHS.

The Scientist Training Programme (STP) is a three year programme of work-based learning, supported by a University accredited master's degree.

Trainees are employed by an NHS trust for the duration of the programme and will spend time in a range of settings, before specialising in the last two years of the programme.

The aim of the STP is to produce graduates who will possess the essential knowledge, skills, experience and attributes required of a newly-qualified Clinical Scientist in the NHS. They will be competent to undertake complex scientific and clinical roles, defining and choosing investigative and clinical options, making key judgements about complex facts and clinical situation within a quality assurance framework. Once complete, registration with the HCPC can be achieved.

<https://nshcs.hee.nhs.uk/programmes/stp/>

Health & Care Professions Council

All our Healthcare Scientists are registered with HCPC. They are a regulator of health and care professions in the UK. Their role is to protect the public.

The HCPC Register stores the details of all health and care professionals who meet their standards for training, professional skills, behaviour and health. After completing professional training, you'll need to apply to join it.

<https://www.hcpc-uk.org/>

What Our Staff Say

I really wanted to practice hands on science which provided tangible and usable results in a short space of time. For me, Pathology ticks all of these boxes with the added bonus of keeping people healthy.

Many roles in the pathology department, mine included, involve a level of problem solving. For me, curiosity about science and getting to the answer is one of my main motivations that help me to stay passionate about my job. You have to be prepared to be continuously learning and changing how things are done as technology advances and knowledge increases.

I still find that I am learning new things year on year, especially with new innovations in medicine and technology always on the horizon.

I really find it interesting helping to work out what has gone wrong and being part of the whole patient process.

Heads Up On Other Careers In Pathology

Pathology is also supported by a range of other professions:



Choose Leeds Teaching Hospitals

We are building a new pathology laboratory at St James's Hospital. The building is scheduled to be completed in summer 2023 and will serve patients from across West Yorkshire and Harrogate. It will co-locate the majority of pathology services across the Trust into one, purpose-built, state-of-the-art facility that will drive improvements in diagnostic testing across our region.



Choose Leeds

Not only is Leeds ranked one of the best cities in the UK, our overarching vision is to be the best for specialist and integrated care and as such we work as a system partner to provide person centred care in our hospitals, in the community, and at home. We have been working together with local Higher Education Institutes (HEIs) to develop high quality education and training that is accessible and flexible enough to fit around people's lives.

We recognise that our different backgrounds and life experiences are what make our science profession among the best in the world.

That's why our unique Future Pathology partnership is open to anyone with a passion and drive to work in science.

You don't need to have any formal qualifications to take the first step to a career with us.

At Leeds Teaching Hospitals NHS Trust you'll earn an excellent salary and benefits package whilst being supported to attend college or university.

Our programme is designed to be flexible so you can take those steps on the career ladder at a time that suits you.

Is Pathology For You?

Looking for a career in Science within the NHS as an important part of the patient pathway?

Experience Pathology - Virtual Open Day



Join Leeds Pathology - Improving our people's health by diagnosing health conditions, recommending treatment options and preventing ill health.

#careerPATHology