

Building the healthcare of the future



**Building the
Leeds Way**

Stakeholder briefing

Improving the health and economic future of our region

Dame Linda Pollard, DBE DL Hon. LLD, Chair of Leeds Teaching Hospitals NHS Trust explains how its Building the Leeds Way programme is a once-in-a-generation opportunity to make a positive impact on the health and economic prosperity of people across Leeds, Yorkshire and beyond.

We're proud that our Building the Leeds Way project to develop new adults' and children's hospitals, a new Pathology laboratory and the regeneration of the Leeds General Infirmary site is making great progress - a testimony to the commitment of everyone involved with this fantastic development.

We are trailblazers here in Leeds and I'm very impressed by how quickly we've moved forward despite the many challenges that the COVID-19 pandemic has presented. Our new hospitals will focus on patient-centred care with modern and forward-thinking environments allowing our staff to provide the most advanced care and treatments in hospital or remotely.

- The new children's hospital will be designed with children and young people in mind, bringing health services together in a building dedicated to their needs.
- The new adults' hospital will provide fully integrated healthcare and develop the outstanding clinical services currently provided for patients.

- Our new, £27 million Pathology laboratory will provide state-of-the-art pathology services for Leeds, West Yorkshire and Harrogate.

The release of surplus estate at Leeds General Infirmary will support the new Innovation District in Leeds and bring huge economic benefits for the city and wider region.

You can read more about Building the Leeds Way on the following pages. We're very excited about the programme and look forward to updating you as the work progresses.



Dame Linda Pollard DBE DL Hon. LLD
Chair, Leeds Teaching Hospitals NHS Trust



Dame Linda Pollard DBE DL Hon. LLD
Chair, Leeds Teaching Hospitals NHS Trust





Bringing together patient care, science and innovation

Leeds hospitals charity

charity number: 1170369

Capital appeal

Leeds Hospitals Charity is tasked with raising at least £30m towards the new Leeds Children's Hospital. This will fund ground-breaking equipment and support research to transform care for patients and help to create a truly personalised hospital.

To help achieve this, the charity is currently forming a Capital Appeal Board and will begin a private fundraising phase in 2021, followed by a public appeal after two years.



Leeds Teaching Hospitals NHS Trust has a programme of long-term investment in its healthcare facilities and estate, called Building the Leeds Way. The programme has three elements.

Community involvement

Engaging with patients, staff and wider stakeholders is a key part of the Building the Leeds Way programme. Their input is crucial throughout the programme, from taking part in the public consultation on co-locating inpatient maternity and neonatal services to sharing feedback on the hospitals' design.

This page features proposed designs for the new Leeds Children's Hospital created by children and young people for our Daring Designers competition.



This hospital development will be one of the most significant in the UK. Covering more than 94,000m² at Leeds General Infirmary, it will deliver a state-of-the-art hospital for adults and a purpose-built new home for Leeds Children's Hospital.

Initial funding of £600 million for the project has been confirmed by the Department of Health and Social Care (DHSC) and the Trust continues to explore further funding options to complete the programme.

The project is part of the New Hospitals Programme, a joint initiative between NHS England and Improvement (NHSE/I) and the DHSC, and we are collaborating closely to secure best value for money, and to promote best practice and Modern Methods of Construction.

The project is due to complete in 2025.



A new, £27 million Pathology laboratory at St James's University Hospital will combine advanced technologies and equipment to provide a

cutting-edge Pathology service as part of the West Yorkshire and Harrogate Pathology Network.

Construction will finish in 2023.



With the potential to deliver up to £11.2 billion direct and wider economic benefits in net present value terms, and more than 3,000 jobs, this exciting med-tech

opportunity will develop the potential of the surplus estate at Leeds General Infirmary to support an Innovation District for Leeds.



Bespoke hospital for children and young people — a first for Leeds


Leeds children's
hospital

caring about children



For the first time in Leeds, a brand-new Leeds Children's Hospital (LCH) will bring all our clinical services for children and young people under one roof, in a flagship hospital with a distinct identity that reflects the expertise of its staff.

It will be a new home for Leeds Children's Hospital. Currently children's services are housed in Clendon Wing at Leeds General Infirmary and elsewhere, including a Neonatal Unit at St James's University Hospital.

purpose-built around the needs of our patients and their families – a first for Leeds. It will offer outstanding healthcare in an environment that harnesses the potential of digital advances, new technologies and treatments, research and innovation.

Completed in 2025, the new Leeds Children's Hospital will be designed and

Leeds Children's Hospital is one of the largest specialist hospitals for children and young people in the United Kingdom, providing expert care in areas including cancer treatment, neurology, liver, kidney and bone marrow transplantation, congenital heart surgery and gender identity services.



Following a formal public consultation in 2020 led by NHS Leeds Clinical Commissioning Group and NHSE/I, the new hospital development also brings together services that benefit from co-location, like our inpatient maternity and neonatal services. A brand-new midwifery-led unit (in the adults' hospital) will also offer women more birth choices and safe, efficient care.



In the new hospital, bespoke, technologies will support our staff to deliver and consultation. The Trust has engaged extensively with clinicians, staff and patients to make sure the hospital's design works for them and will continue to seek their input throughout the project.

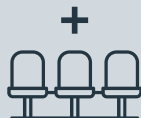
carefully planned facilities, digital and new high quality, flexible care, including remote monitoring

The new Leeds Children's Hospital will enable us to expand and meet the demand for our highly specialised services, benefiting patients in Leeds, Yorkshire and the Humber and in some cases, further afield.

It will include:



Centralised inpatient, co-located general and specialist outpatient and therapy services



A brand-new day case unit and theatre suite, shortening inpatient stays for children who do not need a long hospital stay



Extra theatre capacity, to support growth in our specialist services



Space to expand our research and innovation



A larger High Dependency Unit to increase our surgical capacity



A new Long-Term Ventilation Unit to support children with long-term conditions who need ventilators



Space to improve the flow through our children's emergency and urgent treatment facilities



Places for play, relaxation and for families to be together



A state-of-the-art imaging facility and new interventional radiology suite



Innovation and excellence in a new adults' hospital

Our exciting plans for a new adults' hospital will create a state-of-the-art facility to enhance the outstanding clinical services currently provided for patients in Leeds, Yorkshire and beyond.

Leeds General Infirmary is a centre of excellence for national and regional specialist services, globally recognised for research and innovation and a leader in medical education and training.

The new hospital facilities will support patients across the care pathway, from those attending for an outpatient appointment or a day case surgical procedure to those needing our most advanced care and support to recover from critical illness or injury. The new building will support staff to work in an integrated facility dedicated solely to patient health and wellbeing.

New theatres for day case surgery will reduce the number of inpatient hospital stays. For the first time, a new Maternity Centre will incorporate a midwifery-led unit and co-locate all inpatient maternity services and neonatal services on one site.

The new adults' hospital will include:



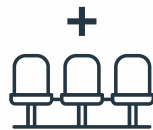
Day Case Surgical unit



New inpatient Maternity Centre
(centralised with neonatal services)



New endoscopy unit



Centralised Outpatient and Therapy services



24-bed extension to the critical care unit



New ambulatory Imaging unit to increase imaging capacity



Multi-Specialty Assessment Area for specialist surgical patients





Leading in innovation and sustainability

The digital and innovation agenda is changing how patients access clinical services and how the Trust provides care for its patients.

Our ambition is to design patient-centred services using digital technology to support our clinicians in providing excellent, safe and integrated care. Our services will also support patients to engage with and manage their care more effectively.

We want our new hospitals to harness the use of new technology to provide more personalised

and flexible care that will have a positive outcome for patients. In achieving this we want patients to feel empowered - to take more control of their own healthcare through the use of portals and remote technologies.

As we plan digital services in our new hospitals we are also asking staff how they currently work with technology and innovation and how it can further help them in their roles to deliver the best possible healthcare to patients.

The Trust also has a vision for its hospitals to be the most sustainable by:

- leading on sustainability and carbon reduction
- promoting best practice through Designing for Manufacture and Assembly and Modern Methods of Construction
- becoming the first UK acute trust in the New Hospitals Programme to be accredited to the WELL Building Standard.

The new hospitals will make the best use of space - removing around 150,000m² of surplus estate. The development will also contribute to reducing backlog maintenance and repairs for the Trust estimated to be around £100 million.



At a glance

A guide to some of the fantastic facilities in the new hospitals

The new Adults' Hospital will include:



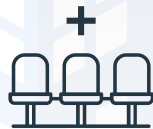
Day Case Surgical unit



New inpatient Maternity Centre
(centralised with neonatal services)



New endoscopy unit



Centralised Outpatient and Therapy services



24-bed extension to the critical care unit



New ambulatory Imaging unit to increase imaging capacity



Multi-Specialty Assessment Area for specialist surgical patients

The new Leeds Children's Hospital will include:



Centralised inpatient, co-located general and specialist outpatient and therapy services



A brand-new day case unit and theatre suite, shortening inpatient stays for children who do not need a long hospital stay



Extra theatre capacity, to support growth in our specialist services



A state-of-the-art imaging facility and new interventional radiology suite



A larger High Dependency Unit to increase our surgical capacity



Places for play, relaxation and for families to be together



A new Long-Term Ventilation Unit to support children with long-term conditions who need ventilators



Space to improve the flow through our children's emergency and urgent treatment facilities



Space to expand our research and innovation



650 space carpark





State-of-the-art pathology services for Leeds and the region



The new Pathology laboratory – which will be part of the West Yorkshire and Harrogate Pathology Network formed through the collaboration of the West Yorkshire Association of Acute Trusts – will enable the Trust to release old estate that could be developed to benefit Leeds in the future as part of an Innovation District in the city centre.

Peter Kabuga who recently qualified as a specialist biomedical scientist said:

“This new state of the art laboratory will offer me a great opportunity to further develop and enhance my skills and expertise to deliver a great pathology service for our patients.”

Design of the new buildings has begun, with demolition of the old buildings at St James’s planned to complete in Spring. Construction work is due to start towards the end of 2021.

A new £27m pathology laboratory based at St James’s University Hospital will provide state-of-the-art pathology services for Leeds, West Yorkshire and Harrogate.

Pathology plays an integral role across the Trust in diagnostics, treatment planning and wider research.

Built to accommodate cutting edge equipment and specialist technology, the new laboratory – due to be completed in 2023 - will be designed to provide fast, accurate, routine and specialist testing. Supported by the West Yorkshire and Harrogate Health and Care Partnership, the new facility will serve hospitals across Leeds,

West Yorkshire and Harrogate. It will allow Leeds Teaching Hospitals NHS Trust to bring many of its pathology services together into a purpose-built laboratory - incorporating some of those services currently housed in outdated facilities in the Old Medical School at Leeds General Infirmary.

A major benefit of the new laboratory will be in supporting hospitals across the region to improve diagnostics for patients and help to meet the growing regional demand for specialist treatment and care. It will also provide important development opportunities for staff.

More than
3,000 jobs and
up to £11.2 bn
 net present value
 for our region



Early concept visual

A unique development, Hospitals of the Future will not only support advanced healthcare for patients, it will also release up to five hectares of estate to support a new Innovation District for Leeds.

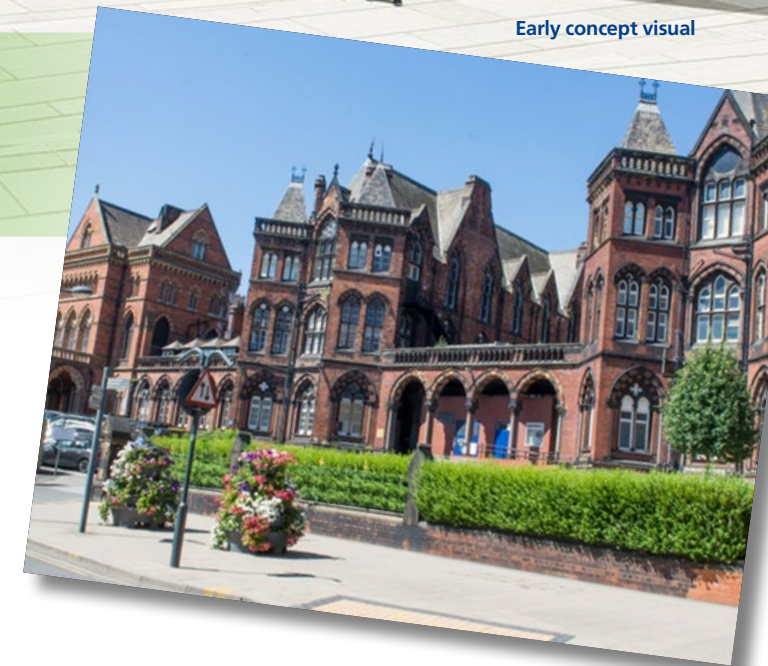
This exciting, strategic partnership brings together Leeds Teaching Hospitals NHS Trust, Leeds Beckett University, the University of Leeds, Leeds City Council and the private sector to drive regeneration, innovation and economic growth for Leeds and the wider region.

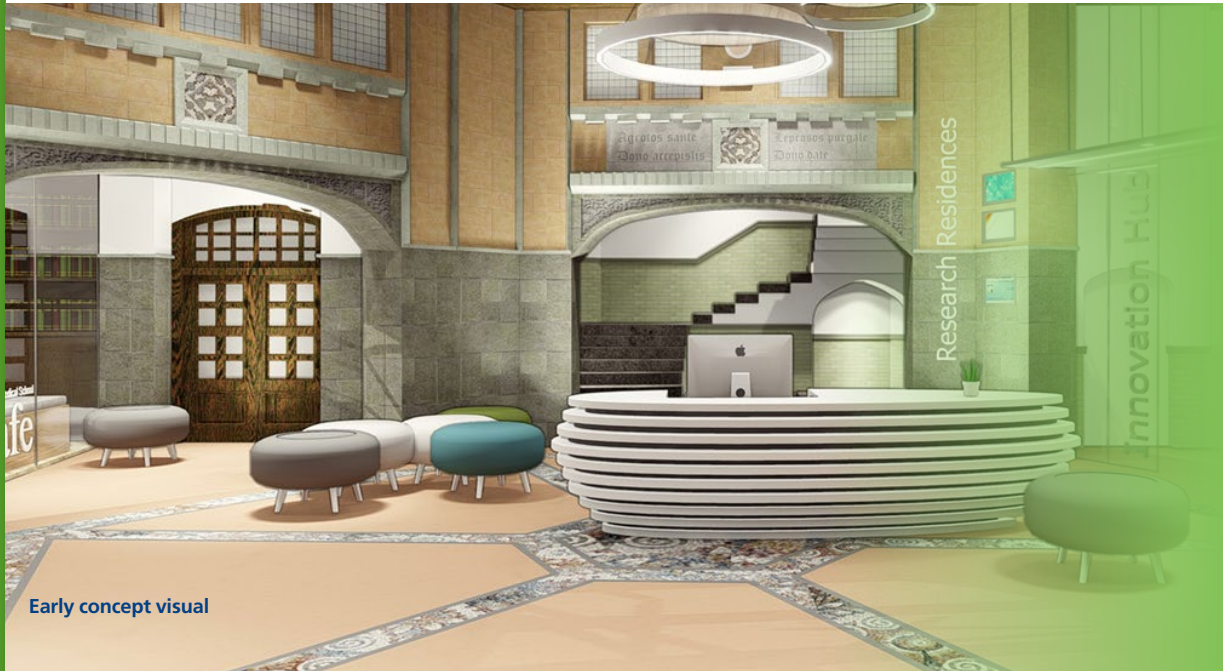
A sizeable amount of the old estate at Leeds General Infirmary (LGI) is no

longer suitable for modern healthcare, or will become redundant when the Hospitals of the Future development is completed.

The LGI Development Site project is a programme to release the potential of this surplus estate. It offers a number of exceptional opportunities for mixed-use development, creating spaces for education, innovation,

commercial uses including retail and office space, and accommodation to support the growth of the Leeds Innovation District.





Early concept visual

At a glance

- The Leeds General Infirmary Development Site project will release five hectares of surplus estate for development to support an Innovation District for Leeds.
- The Leeds Innovation District is a strategic partnership between the Trust, the Leeds Universities, Leeds City Council and the private sector to develop a world-class hub for healthcare, industry partnerships, innovation and research.
- The LGI Development Site project will deliver direct and wider economic benefits of between £5.5bn to £11.2bn in net present value terms and more than 3,000 jobs.

The Leeds Innovation District will incorporate the new hospitals and the surrounding area. It will create a world-class hub for healthcare talent, industry partnerships, research and training. It will focus on three key areas.



Infrastructure and Advanced Urban Sciences, including engineering, transport, low carbon initiatives and smart cities.



Creative and digital industries.



Health and life-related sciences and innovations, including medical technologies, digital health and precision medicine.

It has already seen investment from the University of Leeds in its £40million Nexus innovation hub, and in the £80 million investment in the Leeds Beckett University of Film, Music and Performing Arts, among others. Over time, the Leeds Innovation District is set to become a world-leading centre for industry and innovation, and a vibrant place to live and work.

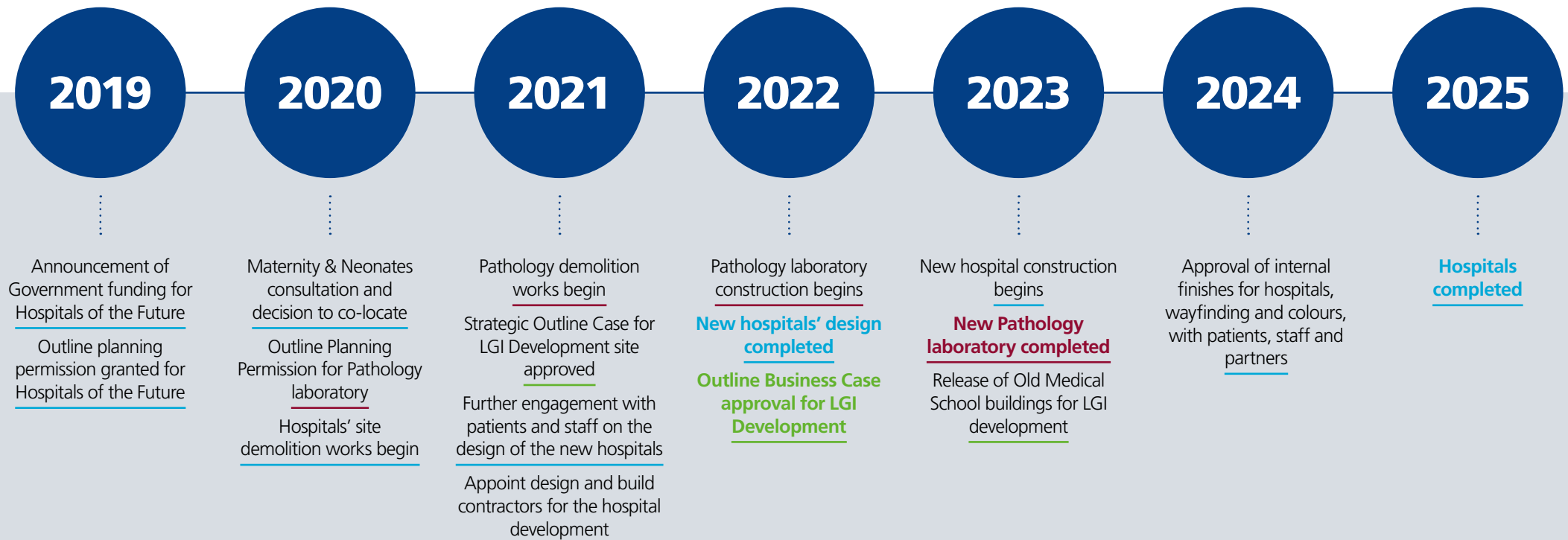
The Strategic Outline Case for the LGI Development was approved by the Trust Board in January 2021 and the Outline Business Case will be completed later in the year.

Already, it is clear that the impact on jobs and economic growth for Leeds and the wider region of the LGI Development project will be lasting. An independent Economic Impact Assessment report indicates:

- **direct and wider economic benefits of between £5.5bn to £11.2bn in net present value terms**
- **more than 3,000 direct jobs FTE.**



Building the Leeds Way



Key for associated project stages:



This briefing is the latest update on our exciting Building the Leeds Way programme. Look out for further updates as our work continues.

For further information about the Building the Leeds Way programme and Hospitals of the Future project, visit:

www.leedsth.nhs.uk/about-us/btlw

To find out more about Building the Leeds Way, email:

leedsth-tr.btlw@nhs.net

 [LeedsTHTrust](https://www.facebook.com/LeedsTHTrust)

 [@leedshospitals](https://twitter.com/leedshospitals)

Copies of this information can be made available in different formats and languages. Please contact the email address above for more information.

