

vectos. | PART OF SLR



The Leeds
Teaching Hospitals
NHS Trust



The Travel Plan Executive Summary

HEALTHIER PLANET
HEALTHIER PEOPLE

Foreword

The Trust's vision is to be the best for specialist and integrated care and improve the health of our patients through the provision of high quality care. We recognise that if we are to provide the best possible care to our patients and improve their quality of life, we need to significantly reduce our impact on the environment. The Trust is committed to reducing emissions associated with our activities and operations and our Green Plan details how we plan to reduce our environmental impact. While the COVID-19 pandemic has provided some flexibility in remote work, travel remains indispensable for our staff, patients, and visitors.

Recognising the significance of decarbonising travel in our pursuit of achieving a net zero target by 2040, we are aware that transportation inherently contributes to carbon emissions, strains transport networks, and affects air quality. Consequently, it is crucial to establish a structured plan that ensures travel remains accessible, efficient, and resilient while minimising adverse environmental effects.

Our Travel Plan outlines the necessary steps we will take to ensure all our hospitals promote sustainable modes of transportation, along with strategies to encourage our staff, patients, and visitors to adopt sustainable travel behaviours when commuting to and from our facilities.

We are committed to embedding sustainability across our organisation so that we can deliver a greener NHS and create a healthier environment for patients, staff and the communities we serve.

Craige Richardson

Executive Director of Estates and Facilities

Chris Kelly

Associate Director Estates Compliance and Risk

Sustainable Travel and Transport

The NHS is responsible for 5% of all road traffic in the UK, significantly adding to air pollution and carbon emissions.

LTHT is in a central position within Leeds, and with staff, patients and visitors frequenting our hospitals, we need to consider how we can reduce polluting transport and minimise the Trust's contribution to air pollution, in turn improving air quality and health outcomes in the area.

The Trust's Green Plan has a dedicated focus on Travel and Transport to help drive change and reduce carbon emissions, which covers how we plan to:

- Facilitate Active Travel and Public Transport in line with the Sustainable Travel Strategy
- Support the transition to low and zero emission vehicles
- Maximise efficiencies in the transportation of goods and services

Several successes have already been made, including allocating £1.5 million of capital funding to facilitate sustainable travel, which includes improved cycle storage and security.



HEALTHIER PLANET
HEALTHIER PEOPLE

Leeds Teaching Hospitals NHS Travel Plan





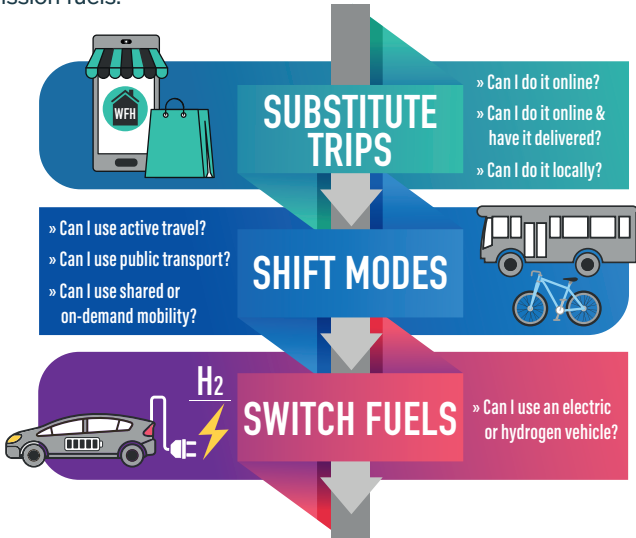
Contents

INTRODUCTION	03
WHAT IS A TRAVEL PLAN	04
LGI BASELINE DATA	06
LGI OPPORTUNITIES	07
ST JAMES'S BASELINE DATA	09
ST JAMES'S OPPORTUNITIES	11
MOBILITY HUB LOCATION AT LGI	12
MOBILITY HUB LOCATION AT ST JAMES	12
CHAPEL ALLERTON BASELINE	14
CHAPEL ALLERTON OPPORTUNITIES	15
WHARFEDALE, OTLEY BASELINE DATA	16
WORKING WITH OTHERS	18
TAKING THE PLAN FORWARD	19
SEACROFT BASELINE DATA	20
SITE WIDE OPPORTUNITIES	21

Introduction

This Travel Plan (TP) Document will inform the Trust on site-by-site existing travel patterns and behaviour. It will also identify a number of site specific and site wide practical measures and high-quality infrastructure improvements designed to influence travel towards more sustainable modes.

This TP has been developed based on Vectos' **SAM Framework**. With this Framework putting emphasis on the following: **1.** Reducing the number trips overall; **2.** Maximising the shift to active and shared forms of mobility; and **3.** Switching the remaining journeys to zero emission fuels.



What is a Travel Plan

Government bodies define a Travel Plan (TP) as the following:

“A Travel Plan is a long-term management strategy for an organisation or site that seeks to deliver sustainable transport objectives and is regularly reviewed”. (Source: DfT and DCLG)

‘A Travel Plan is a package of measures designed and implemented to encourage and enable safe, healthy and sustainable travel choices.’ (Source: Leeds.gov.uk)

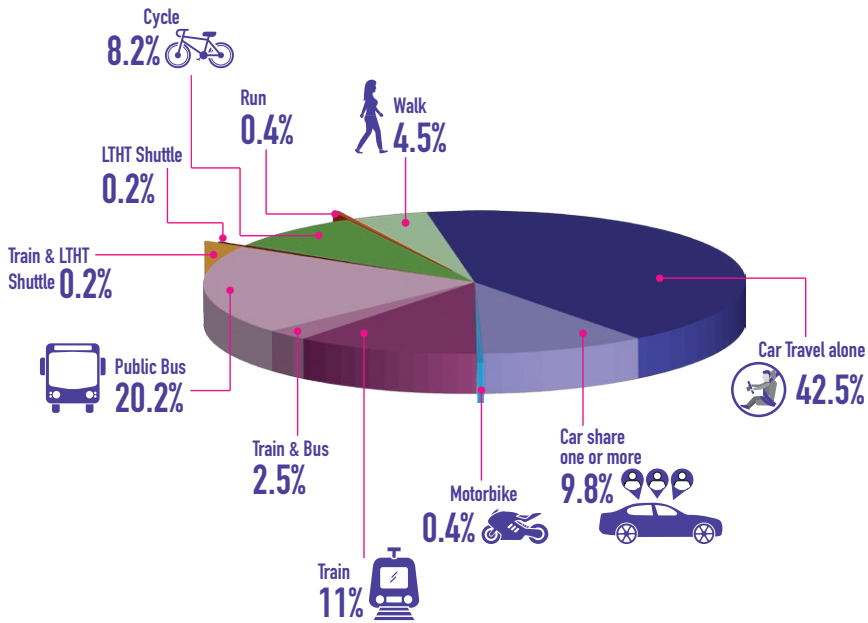
In light of the opposite, this LTH TP will provide the following outputs:

1. Review the existing implemented site wide TP.
2. Review existing Staff Travel Mode Data.
3. Propose a package of measures to help LTH improve the delivery of their sustainable transport objectives for all site users, but in particular for staff members.



Leeds General Infirmary (LGI) Baseline Data

✓ Strengths	✗ Weaknesses
<ul style="list-style-type: none"> + City Centre Location + Good surrounding Pedestrian and Cycle Provision + Excellent Bus and Train provision is in walking distance + Good on-site cycle parking facilities, with no capacity issues + Live Travel Information board in the Jubilee Main Entrance Lobby Area 	<ul style="list-style-type: none"> - Limited space due to City Centre Location - Lack of way-signage to key public transport nodes - Lack of adequate weather protection facilities around the Hospital; bus shelters, covered walkways - Lack of on-site shower and drying room and locker facilities for pedestrians and cyclists - Active Sustainable Travel Webpage outdated - Areas of public realm in and around hospital entrance points poor and car dominated




LGI Opportunities to Increase Sustainable Travel


1.

Provide **way-signage** to key public transport nodes. This improvement would help users better navigate the physical environment and help direct them from LGI to the key transport nodes ie. Leeds Train Station and local bus stops.
2.

Better **weather protection facilities** at the Hospital bus stops ie. shelters. This would improve the waiting environment for users, particularly in poor weather conditions.


3.

Roll out existing Leeds City Council streetscape palette and products to LGI areas to **improve areas of public realm**, particularly around high footfall spaces ie. entrance points.


4.

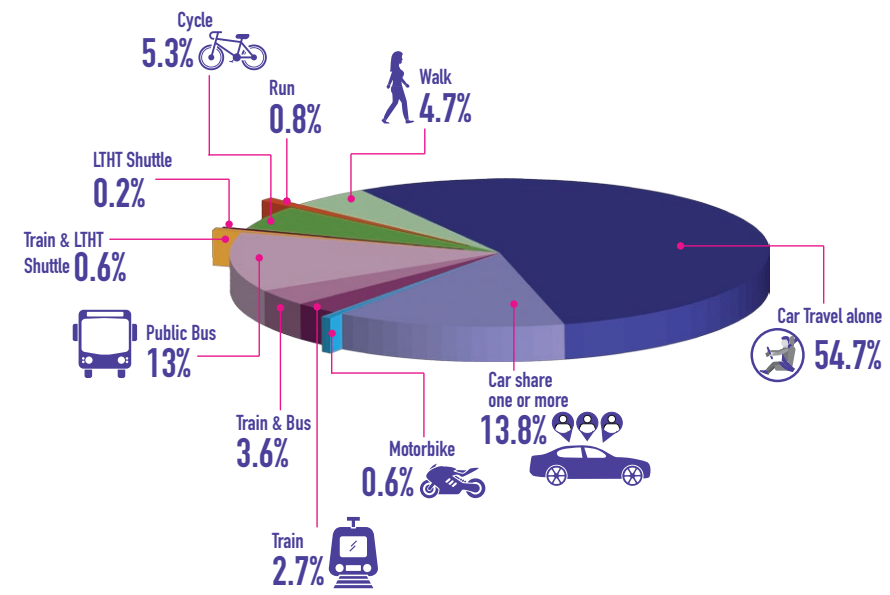
Provide a **Mobility Hub** to bring together public transport, shared travel and active travel options to provide a multimodal facility at the heart of the Hospital.



“ The LGI Hospital Bus Stops could be upgraded to provide weather protection. This will create an improved waiting environment for users and help encourage public bus use to/from the site. ”

St James's Hospital Baseline Data

✓ Strengths	✗ Weaknesses
<ul style="list-style-type: none"> + Lots of space + Good surrounding Pedestrian and Cycle Provision + Excellent bus provision in walking distance 	<ul style="list-style-type: none"> - Lots of available (free or discounted) parking provision available, including unrestricted car parking on the local road network and resident permit provision - Some walking infrastructure within the publicly adopted highway is constrained - Lack of way-signage to key public transport nodes - Active Sustainable Travel Webpage outdated



St James's Opportunities to Increase Sustainable Travel

1.

Provide a **Mobility Hub**. This would bring together public transport, shared transport and active travel options, to provide a multimodal station at the heart of the Hospital.



2.

Provide **way-signage** to key public transport nodes. This improvement would help people better navigate the physical environment and help direct them to key transport nodes.



3.

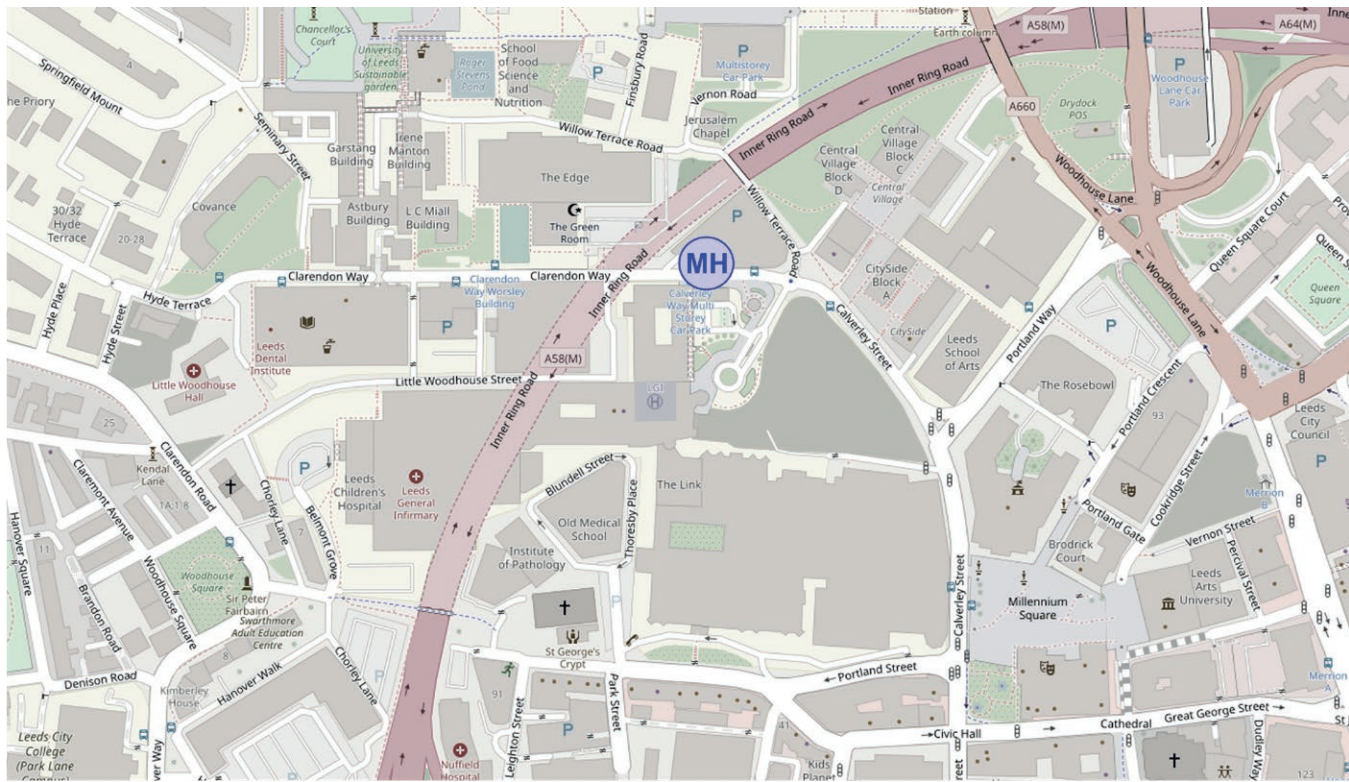
Provide a **level walking and cycling route** through the site.



“ A mobility hub would provide St James's Hospital with a focal point for sustainable transport. Some of its features could include high-quality bicycle parking, a bicycle repair area/shop, e-bike share facilities, EV charging points, shower facilities, and the Staff Shuttle Bus Stop. ”

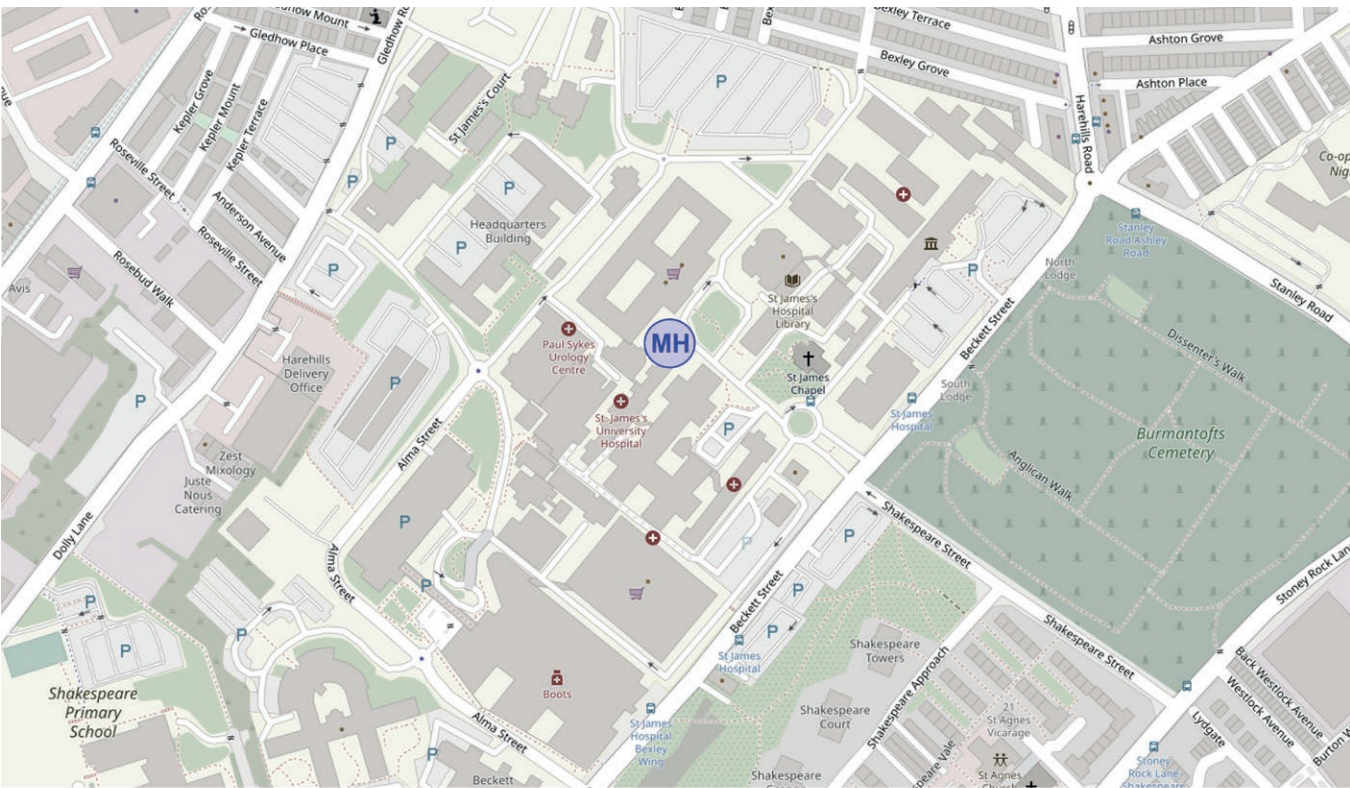


Potential Mobility Hub Location at LGI



MH Potential Mobility Hub Location

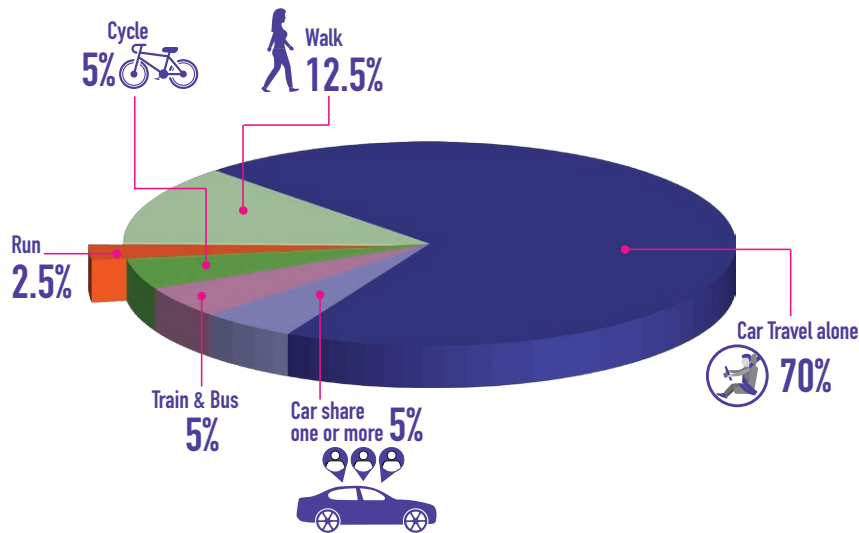
Potential Mobility Hub Location at St James's



MH Potential Mobility Hub Location

Chapel Allerton Hospital Baseline Data

✓ Strengths	✗ Weaknesses
<ul style="list-style-type: none"> + Excellent surrounding Pedestrian Provision + Good bus provision in walking distance + Reasonable on-site cycle parking facilities 	<ul style="list-style-type: none"> - Car parking occupation close to 100% and cars parking on Chapeltown Road - No direct bus services to the rail station - No shuttle bus to other LTHT sites - No way-signage to key public transport nodes - No live arrivals / departures boards - Poor / inadequate short stay butterfly cycle parking stands



Chapel Allerton Hospital Opportunities to Increase Sustainable Travel

1. Provide a **pedestrian route to Newton Road** to improve the site accessibility.
2. Replace poor short stay butterfly cycle parking stands to **Sheffield Stands**.
3. Provide **way-signage** to key public transport nodes.

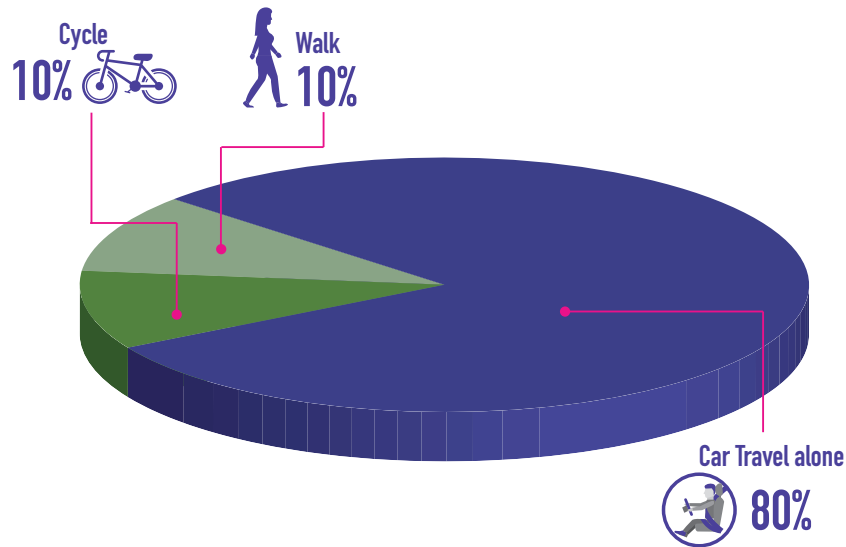


The existing short stay cycle parking facilities in front of the main building entrance at Chapel Allerton Hospital need to be upgraded to Sheffield stands. This will ensure bicycles can be parked securely and can withstand high winds’.



Wharfedale Hospital, Otley Baseline Data

✓ Strengths	✗ Weaknesses
<ul style="list-style-type: none"> + Accessible by walking from the Town Centre + Good surrounding Pedestrian infrastructure + Bus provision that accesses the hospital grounds and provides a link to Otley bus station + Local Bus Stop has Shelter and Seating Arrangement + On-site cycle parking facilities + On-site electric charging spaces 	<ul style="list-style-type: none"> - Only a singular local bus route that doesn't connect to Menston station or to Leeds - Significant walk up hill to access the hospital from the Town Centre
Opportunities	
<ul style="list-style-type: none"> • Increased way-signage to key public transport nodes. • Look at further opportunities for more bus service destinations, through extending Leeds and Menston station services out to the hospital. 	



“ Opportunities to extend the public bus service around Wharfedale Hospital could be explored with the relevant bus operators. ”

Working with Others

Opportunity	Details	How LTH Could Tap into This?
Leeds Public Bike Hire Scheme	This scheme will create a network of e-bikes and docking stations around the City of adapted cycles for hire, which will give people the opportunity to travel sustainability.	As part of this new cycle network, the LTH site locations should be considered as one of the many docking areas for the scheme. In particular this could assist in short journeys between the various sites.
Park and Ride	Leeds has three Park & Ride sites; Elland Road, Temple Green and Stourton. The newest addition is the Stourton site, which caters for trips south-east of the city. There are currently discussions underway for a fourth Park & Ride site to serve the north-east of the City.	Currently the Park & Ride sites do not stop at any of the hospital locations. There is an opportunity here to link St James and the LGI to the Park and Ride route that currently serves journeys to from the City Centre.
Car Clubs	Leeds has a wide network of pay as you go car hire facilities provided by Enterprise Car Club.	In terms of current car club locations, the LGI is served by a car club space on Portland Street on the southern elevation. Other than this there is a lack of car club facilities at the other hospital locations that could be further explored.

Communication

The Travel Plan will be communicated clearly to ensure maximum effectiveness and to encourage high levels of uptake. The TP will be communicated through the following mediums:

1. Website.

2. Staff Inductions.
3. Regular Newsletters.

4. Word of Mouth.



Taking the Plan Forward

LTH should consider the recommendations made in this document. Each recommendation should be evaluated based on feasibility and if funding could be allocated to each / some of the suggested improvements.

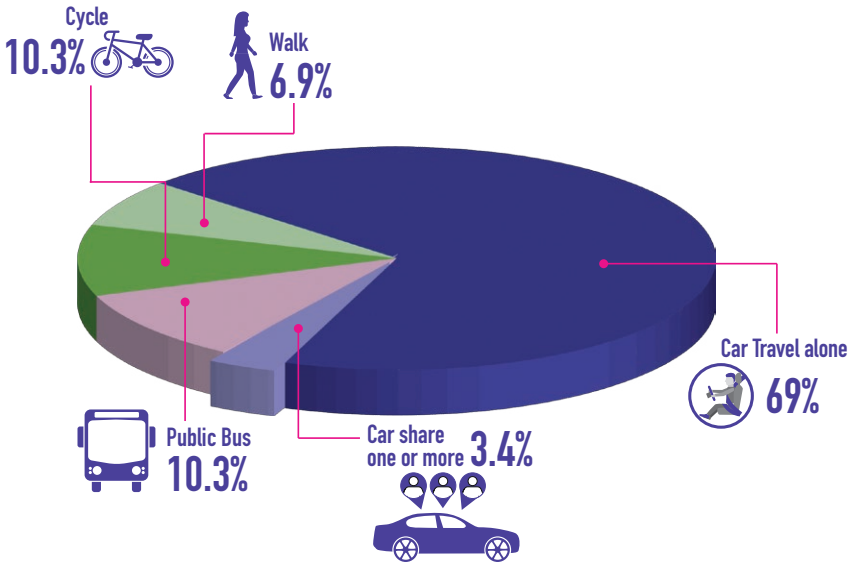
It is anticipated that the larger scale, more innovative suggestions, such as the mobility hub and the improvements to the staff shuttle bus service, would likely result in the greatest shift away from the private car, towards more sustainable journeys.

However, smaller-scale, lower cost, more immediate measures, such as updating the website with the relevant and up-to-date travel webpages, should not be overlooked in terms of potential success to sustainable outcomes.

Seacroft Hospital Baseline Data

✓ Strengths	✗ Weaknesses
<ul style="list-style-type: none"> + Excellent surrounding cycle and pedestrian provision + Good bus provision in walking distance + Cross Gates station relatively close to site 	<ul style="list-style-type: none"> - Chaotic layout, with multiple low-natural-surveillance entrances and access routes to different units - No clear pedestrian route to The Newsam Centre - No shuttle bus to other LTHT sites
Opportunities	
<ul style="list-style-type: none"> • Increased way-signage to key public transport nodes. • Provide clear routes to the main entrance (along the western side of the central road) and The Newsam Centre. 	

Pedestrian routes to the main site entrance(s) at Seacroft Hospital could be improved and made clearer to better facilitate pedestrian trips and linkages’.



Site Wide Opportunities to Increase Sustainable Travel

1. Provide an **improved staff shuttle bus service**. This should include better linkages between all the Hospital sites, including linking to Leeds Train Station. Buses should also be upgraded to provide a more attractive service for staff.
2. Provide **live timetable boards** in more reception areas. This will help inform users on available buses including real time information.
3. **Update the website** to include relevant information, including updated cycle parking maps. This will ensure that users are provided with accurate site-specific information to make an informed travel decision.





Contact

Emilia Gosden

Vectos North
7 Park Row
Leeds, LS1 5HD

Tel: 0113 512 0293

emilia.gosden@slrconsulting.com

OUR AIM IS TO BECOME ONE OF THE GREENEST NHS HOSPITAL TRUSTS

